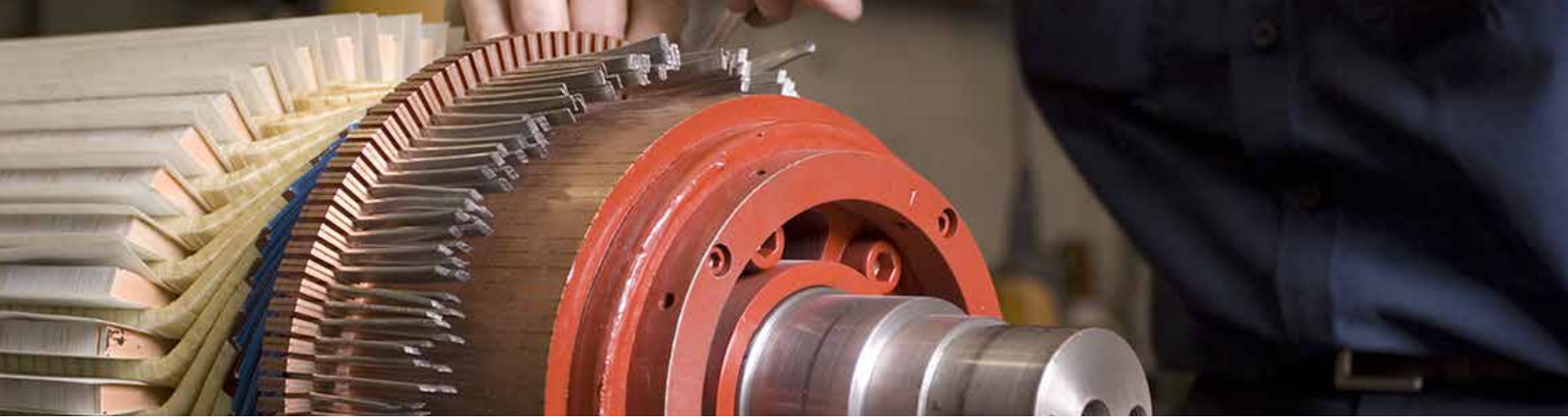




A Magnetech Company

**Complete Industrial Motor
& Apparatus Sales & Service**





Industrial Sales and Services

Southern Rewinding and Sales was founded in 1986 and is now one of the largest industrial and electric motor repair shops in the Southeast. What began as a small motor shop with two employees has grown to a multi-location enterprise with more than 60 employees, many with over 20-plus years of experience.

Southern Rewinding and Sales was acquired by Magnetech Industrial Services, Inc. in May 2015 to operate as a subsidiary within the Infrastructure Solutions segment of Integrated Electrical Services, Inc. (IES). Southern Rewinding and Sales' service offerings and shop capabilities are complementary with Magnetech Industrial Services' Saraland location. Together they make up the motor rewinding segment of Magnetech Industrial Services.

Customer service is our highest priority and the cornerstone of our business. As an active member of EASA (Electrical Apparatus Service Association) and a Certified Drug-Free Workplace, we provide top quality sales and service to every customer. Our selection to the prestigious INC Magazine's Top 500/5000 Company List and selection as a Top Small Company Workplace, shows our passion for excellence in everything we do.

Our Vision

To be the best source of industrial equipment sales and service available anywhere.

Company Certifications

- ATEX
- UL (#E32583)
- ISO 9001
- Infrared Thermography
- Laser Alignment
- Hoist Inspections (#9001 & CRI-628)
- Mine Safety and Health Admin. (MSHA)

Products

Turn to Southern Rewinding and Sales products department when you need results to keep your business running and profitable. Our customer service team will put 25-plus years of experience to work for you. We meet your needs with a wide range of top-quality, brand-name parts and motors that include NEMA and IEC metric designs.

NEW MOTORS

A.O. Smith
ABB
Baldor
General Electric
Hyundai
Marathon Electric
Leeson
Reliance
Siemens
Teco-Westinghouse
Toshiba
Nidec/US Motors
WEG

BEARINGS

Babbitt
NTN
SKF
Sleeve

BRAKES

Rebuilt and New
Dings
Lenze
Stearns

BRUSHES

Factory
Helwig Carbon
South-Land Carbon

DRIVES

Baldor
Fincor
Fuji
Teco-Westinghouse
Toshiba
WEG
Yaskawa

FANS

Cincinnati
Patton
Twin City

GEARBOXES

Dodge
Grove Gear
Morse
Ohio
SEW Eurodrive
Stober
Sumitomo

GENERATORS

Baldor
Kohler
Onan

HOISTS

Budgit
CM Lodestar
Coffing
Demag
Yale Shaw-Box

MIXERS

Chemineer
Lightnin



PULLEYS, BELTS & COUPLINGS

Lovejoy
Martin
TB Woods

PUMPS

ABS
American Turbine
Ebara
Floway
Gorman-Rupp
Goulds
Grundfos
Gusher
ITT Flygt
PACO

SOFT STARTS

Saftronics
TECO
WEG

VACUUM/ ROTARY PUMPS

Busch
Fuji
Gardner Denver
Hoffman
Lamson
Roots
Spencer
Sutorbilt



Services

The Southern Rewinding and Sales service department has over 25 years of experience. We are a Factory Authorized Service Center for many name brands and are able to repair any machinery you need repaired.



AC/DC MOTORS

- Repair Motor 1/10 to 5000 HP, 12 to 4160 Volts
- VPI with Von Roll Varnish
- Install Class H Insulation and Inverter Duty Wire in All Motors
- Dynamic Balancing / Vibration Testing
- All Windings Double-Dipped and Baked
- Surge & Core-Loss Testing (Baker Surge Tester, Lexseco 2025)
- Stator/Lamination Repair and Restacking
- AC/DC Winding Redesign
- UL Approved (#E325383)
- Complete Repair of Waste Water Aerators
- Complete Repair of Servo Motor

GENERATORS

- Complete Repair and Service

MACHINE SHOP

- Custom Shaft Design
- Endbell Repair
- Balancing Capabilities from 1-5000 lbs.
- 75 Ton Press Capabilities
- Welding - Tig, Mig and Plasma
- 10 Lathes Up to 48" Swing with Bed Length 16' in between Centers
- Key Cutting
- Milling Machines
- Broaching with Large Internal Capabilities

PREVENTATIVE MAINTENANCE

- Vibration Analysis-Allen-Bradley/Entec 2500 & Luceda VibExpert
- Laser Alignment - Emerson CSI-2130 & Vibralign
- Belt Alignment - Red Dot L100
- Infrared Thermography - Ti30 Thermal Imager
- Basic Surge Testing
- Polarization Index Testing
- PDMA Motor Testing

ELECTRONICS

- Complete Repair of Electronics
- Complete Repair of AC/DC Drives
- On-Site Troubleshooting of Drives and PLC

HOISTS AND CRANES

- Complete Repair, Preventative Maintenance with Certified Load Testing & Inspection (#090001)

PUMPS

Complete Repair of All Types of Pumps

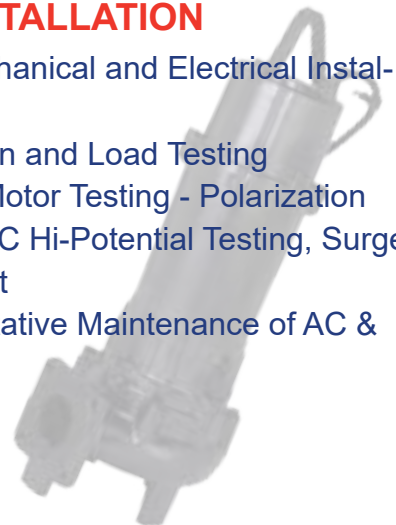
- Vertical Turbine
- Split Case
- End Suction
- Submersible (Sewage)
- Rotary / Vacuum Pumps
- Centrifugal
- Complete Removal and Installation Services

TRANSFORMERS

- Complete Repair and Preventative Maintenance

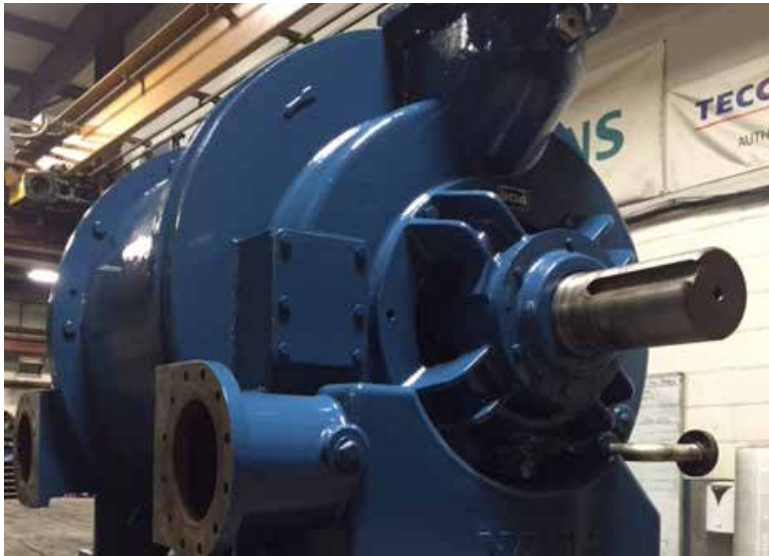
TURN KEY INSTALLATION

- Complete Mechanical and Electrical Installation
- Hoist Inspection and Load Testing
- High Voltage Motor Testing - Polarization Index Testing, DC Hi-Potential Testing, Surge Comparison Test
- Onsite Preventative Maintenance of AC & DC Motors



Markets Served

Aerospace	Municipal Water Works
Agriculture	Plastics
Automotive	Power Generating
Food and Poultry	Power Plant Utilities
Government	Pulp and Paper
Textiles	Consumer Products
Mining	



Equipment Overview

- Automatic Parts Washer
- 4 Burn Out Ovens (Max 96" x 96" x 144")
- 3 Bake Out Ovens (Max 96" x 96" x 120")
- 2 Dip Tanks (96" x 96" x 48")
- Vacuum Pressure Impregnation (VPI) System
- 3 Test Panels (Up to 750 KVA)
- 2 Load Testers & Inertia Base Test Stand
- Paint Booth
- Complete machine shop including 10 Lathes, 3 Milling Machines, 2 Hydraulic Presses (to 75 ton), Dyna-bal Models LM5000 and DH5D (Shop Balancing to 7,500 lb.), Key Cutting machine, 5 welders and capability to weld steel, stainless steel, cast iron and aluminum
- Tri-Point Micrometer Sets & Standards
- 2 Lexseco 2025 Core Loss Testers
- 2 Hipot Testers
- 3 Baker Surge Testers (12 KVA)
- 2 Digital Low OHMS Meggers
- Exttech Inductance Meters





A Magnetech Company

Service Center Locations



- ★ **Columbus Service Center**
5277 Chumar Drive, Columbus, GA 31904
- ★ **Saraland - Magnetech Service Center**
701 Bill Myles Drive, Saraland, AL 36571



Toll Free: (866) 805-9205
Fax: (706) 317-5501
www.southernrewinding.com
sales@southernrewinding.com